

### 1. MANAGE-WB in a nutshell

**MANAGE-WB** (Mitigation, Adaptation, and New Technologies Applied General Equilibrium Model of the World Bank) is a **state-of-the-art, recursive dynamic, multi-sector, multi-commodity, multi-agent, single-country** Computable General Equilibrium (CGE) model.

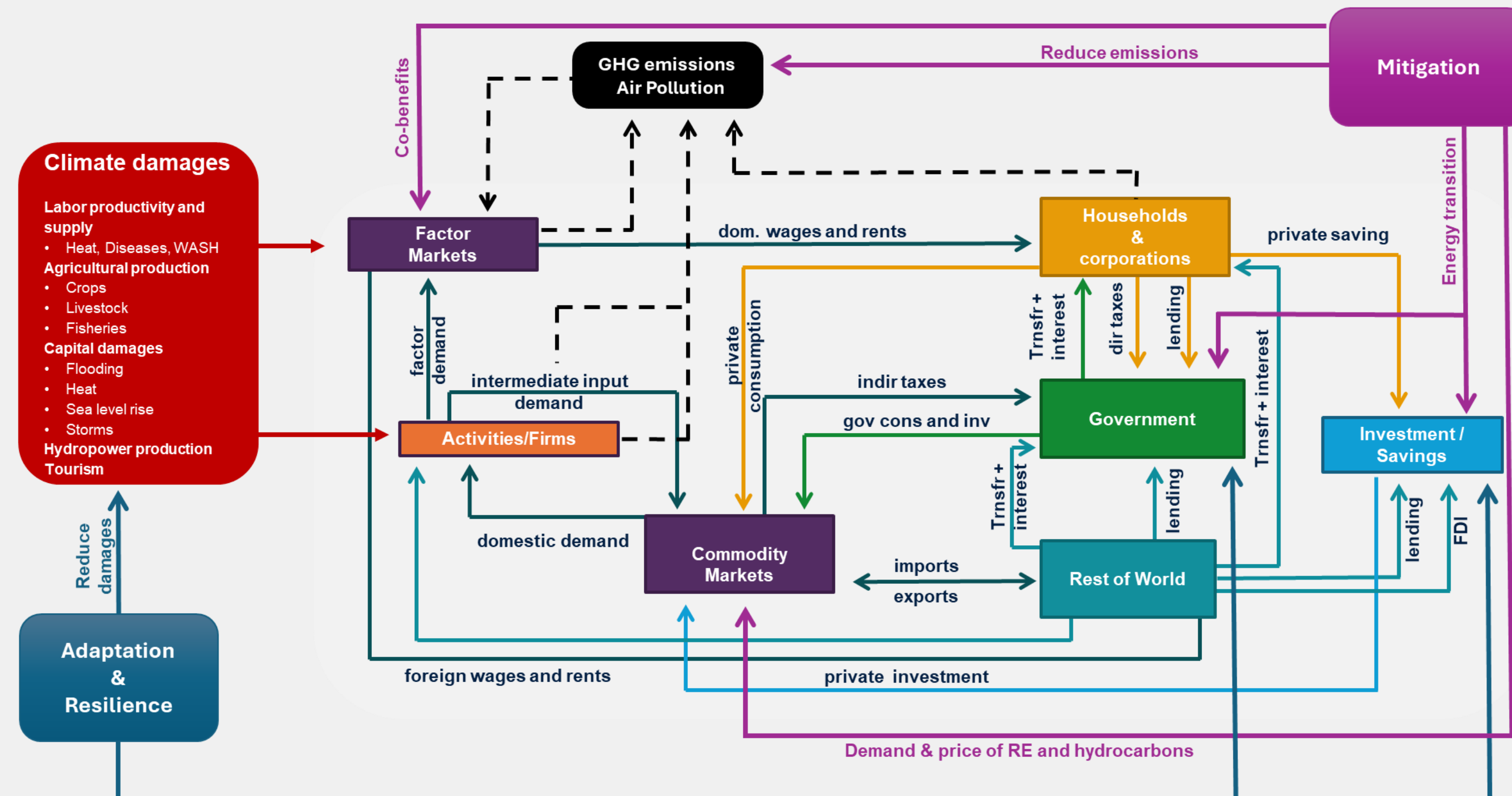
Its recent focus has been on evaluating the **macroeconomic impacts of climate change, mitigation, and adaptation policies**. This analytical framework was used in over 20 Country Climate and Development Reports (CCDRs).

### 2. Whole-of-Economy lens

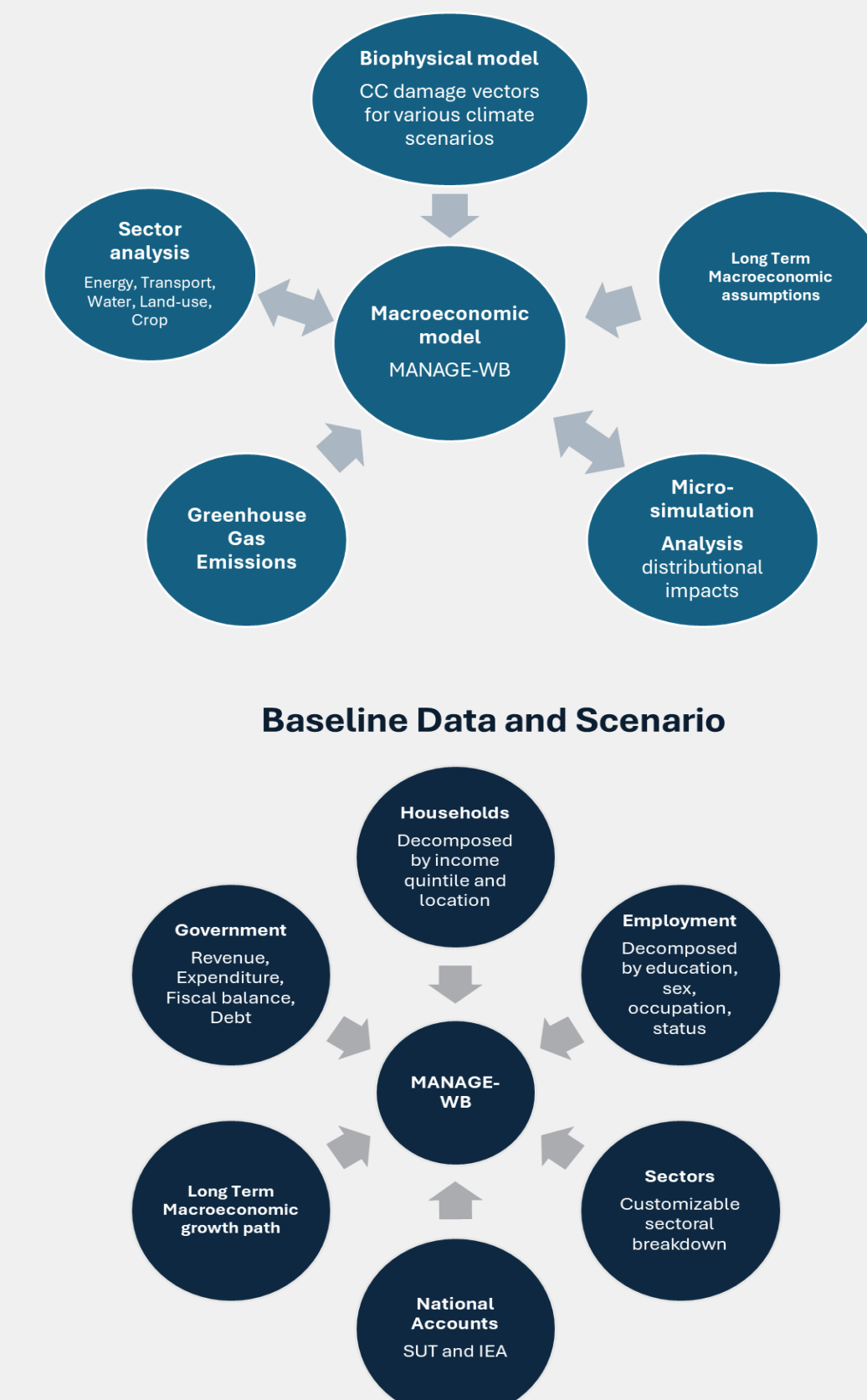


### 3. Climate modules in MANAGE-WB

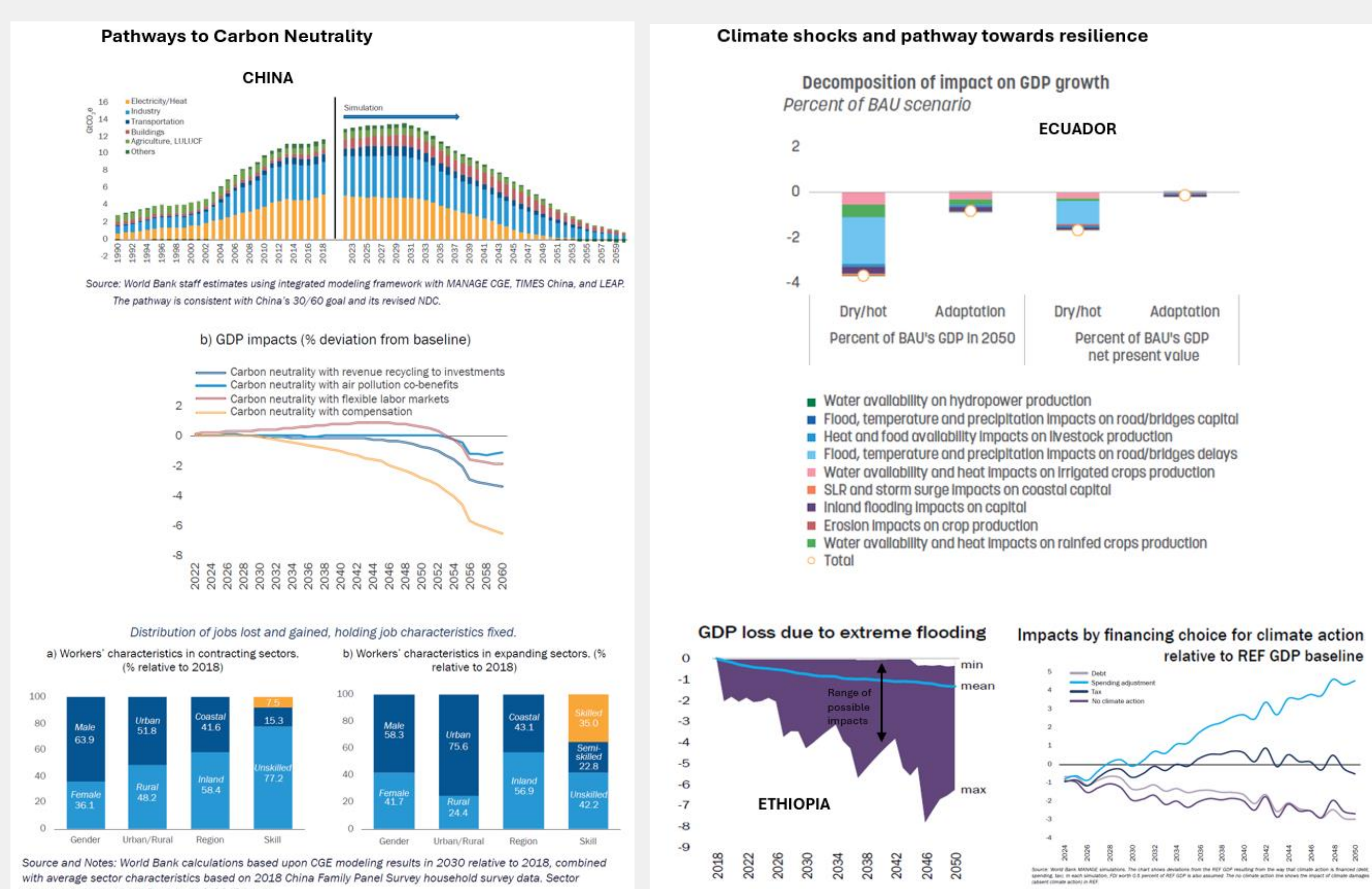
How MANAGE-WB captures the effects of climate on the economy and the effects of economic activity on climate



Linking MANAGE-WB model with other models



### 4. Results from country applications



### 5. How we can help

MANAGE-WB utilizes a user-friendly graphical interface, allowing users to create Social Accounting Matrices for up to 160 countries and simulate baseline and counterfactual scenarios by selecting from a rich list of options, as well as by adding customized inputs.

The WBG modelling team develops and trains Ministry of Finance staff on the use and maintenance of customized climate ready models.

To arrange a presentation for your team contact:

[Macro\\_Modelling@worldbank.org](mailto:Macro_Modelling@worldbank.org)



**Andrew Burns**

Global Lead for Macroeconomic Modelling, World Bank Group



Scan to access the kiosk documentation & further references